

Oral Cancer Check Points

- Extra oral - face and neck, lips
- Intra oral - floor of mouth
tongue
sulcus
palate – hard & soft
oropharynx - throat

AND all other tissues, hard and soft, of the orofacial complex

Names of Tumours

- World-wide standardised naming of tumours

based on cell type of origin

Examples:

Epithelium

Squamous cells: benign-
papilloma

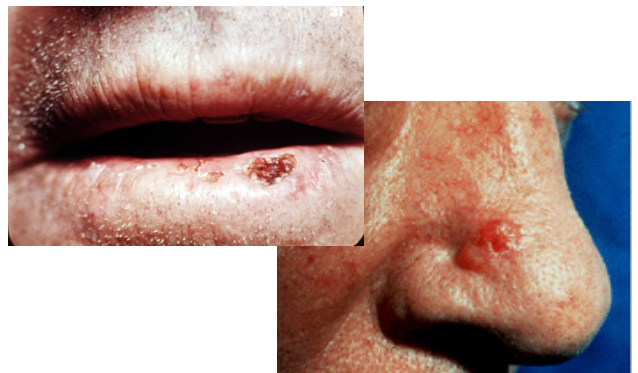
malignant – Squamous cell
carcinoma

Connective tissue

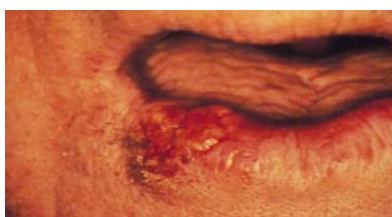
Fat: benign-lipoma. malignant: liposarcoma

Signs and symptoms of possible orofacial cancers

- EXTRAORAL
 - Ulcer on the face
Basal cell carcinoma
 - Sore on the lip
Squamous cell carcinoma



Oral Cancer



THRUSH

Causes:

Uncontrolled diabetes
HIV infection
Cancer
Xerostomia
Hormonal changes

Treatment

Antifungal medications



Medications that upset the microorganisms in the mouth include:

Corticosteroids

Antibiotics

Birth control pill

ANGULAR CHEILITIS

Causes:

Weakened immune system
Bacteria/fungal

Symptoms:

Drooling
Deep creases
Touching
Frequently moving

Treatment:

Anti-fungal medication
Clotrimazole



Other symptoms which MIGHT not be the patients main complaint

- Difficulty in chewing and swallowing
- Unexplained pain
- Something caught in the throat
- Altered sensation – motor or sensory
- If the lesion does not resolve within 2 weeks needs to be reviewed by GP

The 8-Step Oral Cancer Screening

