

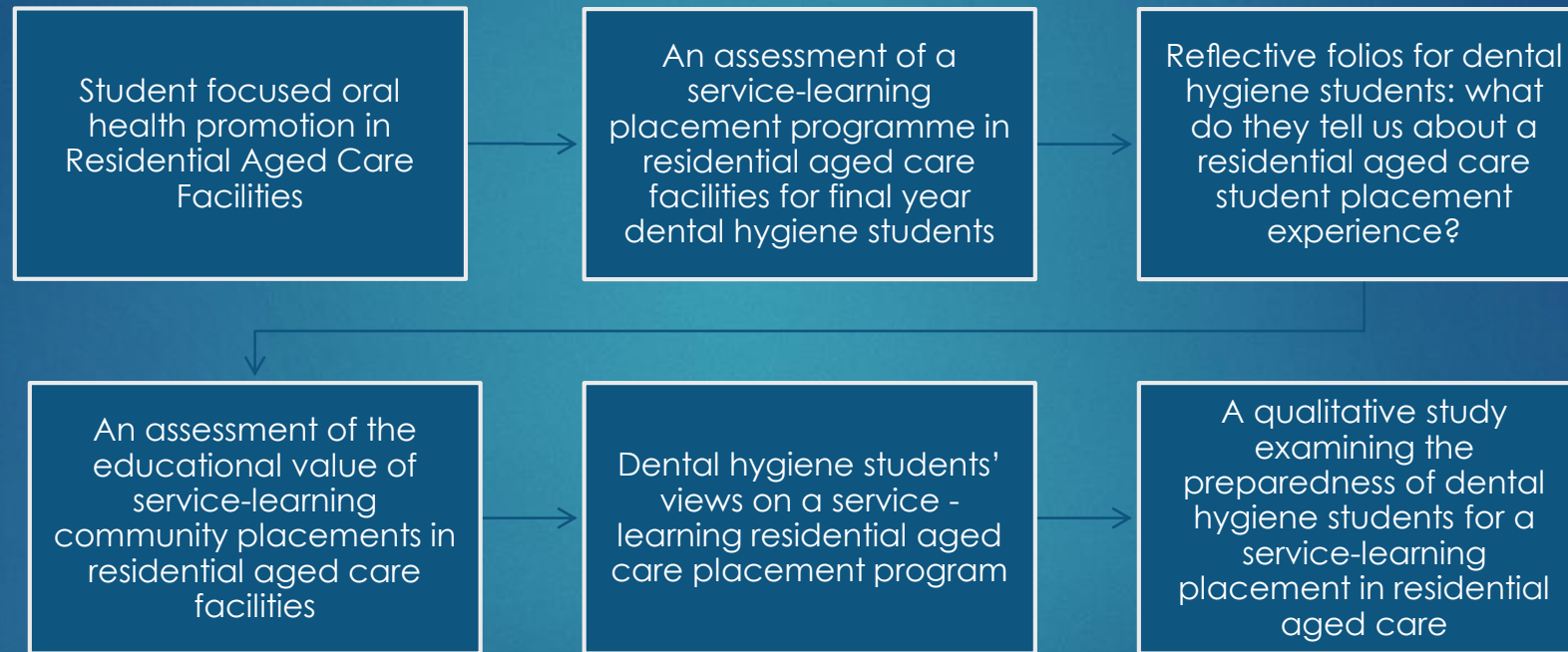


Senior Smiles: A Preventive Oral Health Care Program for Older People Living in Residential Aged Care Facilities

A/Prof Janet Wallace, PhD, GCPTT, BOH, Dip DT, Dip BM, Hon FADI , Hon FICD
[@drjanetwallace](https://twitter.com/drjanetwallace)



Research



Wallace, J. P., Mohammadi, J., Wallace, L. G., & Taylor, J. A. (2016). Senior Smiles: preliminary results for a new model of oral health care utilizing the dental hygienist in residential aged care facilities. *Int J Dent Hyg.* 2016 Nov; 14 (4): 284-288. doi: 10.1111/idh. 12187. Epub 2015 Nov 25



The Model

Oral health risk assessments

Oral health care plans

Education

Referral pathways

Advocacy

Raising the oral health profile

Oral health & general health

Expectations from families

'Senior Smiles' – endorsed by:



Senior Smiles: Cost Benefit Analysis

The Core Principles



Regular visits of the oral health practitioner to the facility



Oral health risk assessments and care plans



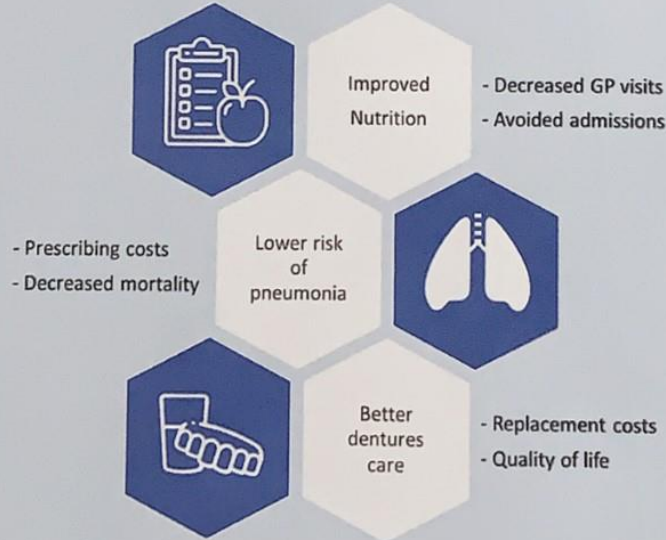
Referral pathways with dentists for more complex needs



Collaboration with the RACF* staff to enhance oral-health skills

* RACF: residential aged care facility

Some of the Benefits



Cost and Benefit Analysis (UK)

- ▶ The Senior Smiles programme is estimated to deliver tangible value in the order of **\$4.13 and \$3.14** of benefit within the health care system for every \$1 invested in the project
- ▶ A further **\$4.87 and \$3.66** are identified in social benefits for every \$1 invested
- ▶ The overall benefits generated per \$1 invested range between **\$7.16 and \$11.12** for the pilot and between **\$5.44 and \$8.35** for the current project
- ▶ Should Senior Smiles be rolled out it is estimated to deliver an overall gross benefit of **\$6.80 and \$6.07 for every \$1** invested respectively for a regional and a national spread

References

Wallace, J. P., Mohammadi, J., Wallace, L. G., & Taylor, J. A. (2016). Senior Smiles: preliminary results for a new model of oral health care utilizing the dental hygienist in residential aged care facilities. *International Journal of Dental Hygiene*, 1-5.

Wallace, J. P., Blinkhorn A.S., & Blinkhorn F.A. (2015). A qualitative study examining the preparedness of dental hygiene students for a service-learning placement in residential aged care. *International Journal of Dental Hygiene*, 1-7.

Wallace, J. P. (2015). The development of a service-learning model of health promotion in the residential aged care environment for dental hygiene students. *Australian and New Zealand Journal of Dental and Oral Health Therapy*, 1(1), 24.

Lewis, A., Wallace, J., Deutsch, A., & King, P. (2015). Improving the oral health of frail and functionally dependent elderly. *Australian Dental Journal*, 60(S1), 95-105.

Wallace, J. P., Blinkhorn, F. A., & Blinkhorn, A. S. (2014). Dental hygiene students' views on a service-learning residential aged care placement program. *Journal of dental hygiene : JDH*, 88(5), 309-315.

Wallace, J. P., Blinkhorn, A. S., & Blinkhorn, F. A. (2014). An assessment of the educational value of service-learning community placements in residential aged care facilities. *International Journal of Dental Hygiene*, 12(4), 298-304

Wallace, J. P., Blinkhorn, A. S., & Blinkhorn, F. A. (2013). Reflective folios for dental hygiene students: what do they tell us about a residential aged care student placement experience?. *European Journal of Dental Education*, 17(4), 236-240.

Wallace, J. P., Taylor, J. A., & Blinkhorn, F. A. (2012). An assessment of a service-learning placement programme in residential aged care facilities for final year dental hygiene. *Journal of Disability and Oral Health*, 13(4), 163-167.

Wallace, J. P., Taylor, J. A., Wallace, L. G., & Cockrell, D. J. (2010). Student focused oral health promotion in residential aged care facilities. *International Journal of Health Promotion and Education*, 48(4), 111-114.